

CABLE CLIPS & CLAMPS



ASK / RAK

Adhesive Mount Aluminum Clamp



Specifications:

- Material: Aluminum, Bright Finish

Features:

- Aluminum arms are flexed around bundle
- Lightweight and durable
- Adhesive mount for quick installation

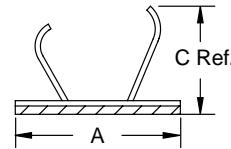


Figure 1

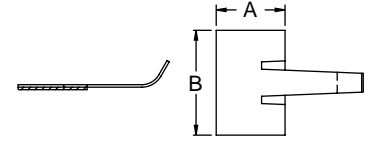


Figure 2

Item No.	Figure	A		B Base Depth		Max Bundle Ø		Bulk Pack Qty.
		In	mm	In	mm	In	mm	
ASK-3	1	0.440	11.3	0.660	16.8	0.234	6.0	250
ASK-6	1	0.620	15.7	0.740	18.8	0.375	9.5	250
RAK-1	2	0.440	11.3	0.670	17.1	0.234	6.0	250
RAK-2	2	0.640	16.3	0.760	19.3	0.375	9.5	250

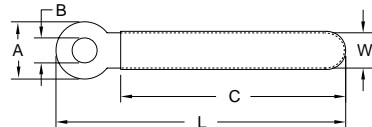
VCC

Vinyl Coated Adjustable Steel Clamp



Specifications:

- Material: PVC Coated Soft Steel
- Color: Body - Steel Coating - Black



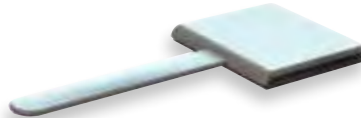
Features:

- For bundling and clamping cable or tubing securely
- Vinyl coating grips and insulates the cable
- Easily bends and forms to desired shape for varying holding diameters

Item No.	Bundle Ø		C Ref.		L Ref.		W Ref.		A		B Ø		Pack Qty.	Bulk Pack Qty.
	In	mm	In	mm	In	mm	In	mm	In	mm	In	mm		
VCC-83028	0.220	5.7	0.710	18.0	1.100	28.0	0.120	3.0	0.315	8.0	0.118	3.0	1	1000
VCC-83535	0.310	7.9	0.980	25.0	1.340	35.0	0.200	5.0	0.315	8.0	0.138	3.5	1	1000
VCC-83540	0.370	9.5	1.180	30.0	1.570	40.0	0.120	3.0	0.315	8.0	0.138	3.5	1	1000
VCC-63048	0.500	12.7	1.570	40.0	1.890	48.0	0.080	2.0	0.236	6.0	0.118	3.0	1	1000
VCC-84554	0.520	13.3	1.650	42.0	2.130	54.0	0.190	4.8	0.315	8.0	0.177	4.5	1	1000
VCC-63254	0.570	14.6	1.810	46.0	2.130	54.0	0.140	3.6	0.236	6.0	0.126	3.2	1	1000
VCC-83664	0.660	16.9	2.090	53.0	2.520	64.0	0.200	5.0	0.315	8.0	0.161	4.1	1	1000
VCC-84576	0.810	20.7	2.560	65.0	2.990	76.0	0.180	4.5	0.315	8.0	0.177	4.5	1	1000
VCC-84584	0.900	22.9	2.830	72.0	3.310	84.0	0.180	4.5	0.315	8.0	0.177	4.5	1	1000
VCC-845126	1.400	35.6	4.410	112.0	4.960	126.0	0.240	6.0	0.315	8.0	0.177	4.5	1	100

PCC

Adhesive Mount Vinyl Coated Adjustable Steel Clamp

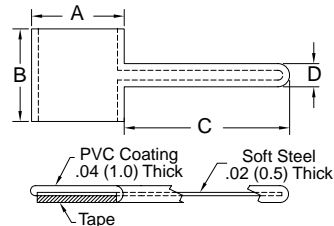


Specifications:

- Material: Soft Steel with PVC Coating
- Color: White

Features:

- Protects and insulates wires or components
- Flexible arm holds flat, round, or oddly shaped components
- Arm may be opened or closed repeatedly and reshaped for varying holding diameters



Item No.	A Ref.		B		C Ref.		D Ref.		Bulk Pack Qty.
	In	mm	In	mm	In	mm	In	mm	
PCC-5	0.310	8.0	0.310	8.0	0.590	15.0	0.080	2.1	1000
PCC-9	0.550	14.0	0.550	14.0	0.980	25.0	0.140	3.5	500
PCC-12	0.750	19.0	0.750	19.0	1.580	40.0	0.160	4.0	500

PFC

Adhesive Mount Foam Coated Adjustable Steel Clamp

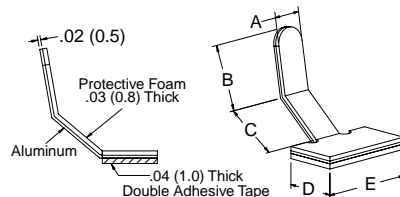


Specifications:

- Material: Foam Coated Aluminum
- Color: Grey Coated

Features:

- Made of aluminum with a protective foam coating on the inside of the clamp that protects cables and fibers
- Flexible arm holds flat, round or oddly shaped components
- Arm may be opened or closed repeatedly and reshaped for varying holding diameters



Item No.	A Ref.		B Ref.		C Ref.		D		E		Bulk Pack Qty.
	In	mm	In	mm	In	mm	In	mm	In	mm	
PFC-25M	0.189	4.8	0.494	12.6	0.437	11.1	0.380	9.7	0.750	19.1	1000
PFC-50M	0.205	5.2	0.573	14.6	0.55	14.1	0.550	14.1	0.980	25.0	1000